



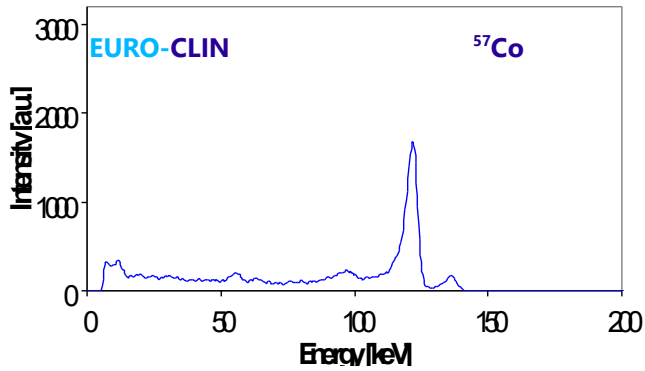
Room temperature High Performance CdTe radiation detector

EURO-CLIN

Two types of systems are available:

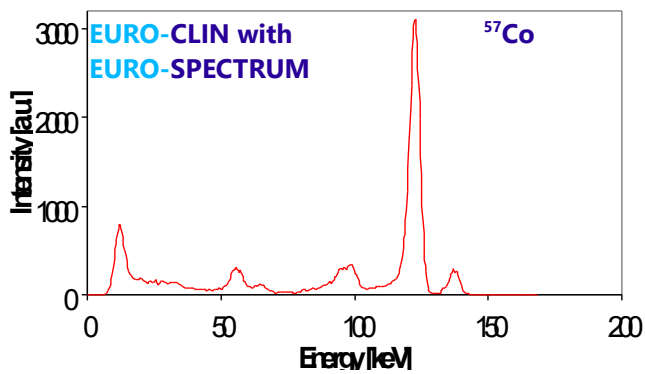
- Spectral resolution of ~5 keV with P/V > 10 & photo-peak efficiency ~40 % for ^{57}Co at 100V (measured with PR16 EUROCLIN's preamplifier)
- Spectral resolution below 5 keV with P/V > 30 & photo-peak efficiency ~60 % for ^{57}Co at 100V (measured with PR16 EUROCLIN's preamplifier & Euro-Spectrum Enhancer)
- APPLICATION: X-ray spectroscopy, High energy spectrometry

EURO-CLIN

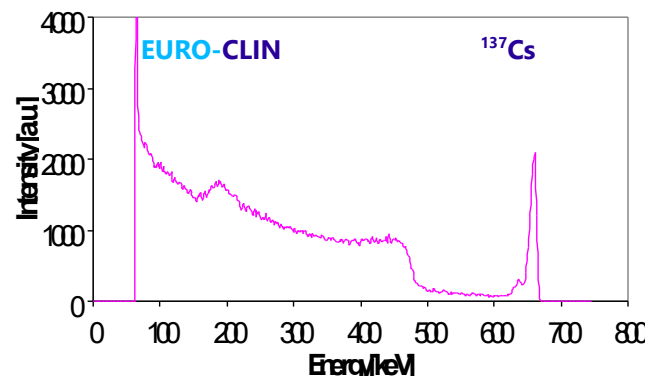


Spectral characteristics for ^{57}Co (122 keV)

DETECTOR	ENERGY RESOLUTION	P/V	RELATIVE PHOTO-PEAK EFFICIENCY
Standard planar	5.6 KeV	2.5	16 %
Standard planar with EUROSPECTRUM*	5.2 keV	12	22 %
EURO-CLIN	5.1 keV	12	42 %
EURO-CLIN with EUROSPECTRUM*	4.5 keV	30	60 %



* **EUROSPECTRUM** : Electronic Pulse Enhancer



Operation : Room temperature

Mounting : - Tungsten housing
- Thin Carbon window

Size : - \varnothing 18mm

- Length : 42.5mm, 55mm with BNC connector

Weight : 122g